



Download from
Dreamstime.com

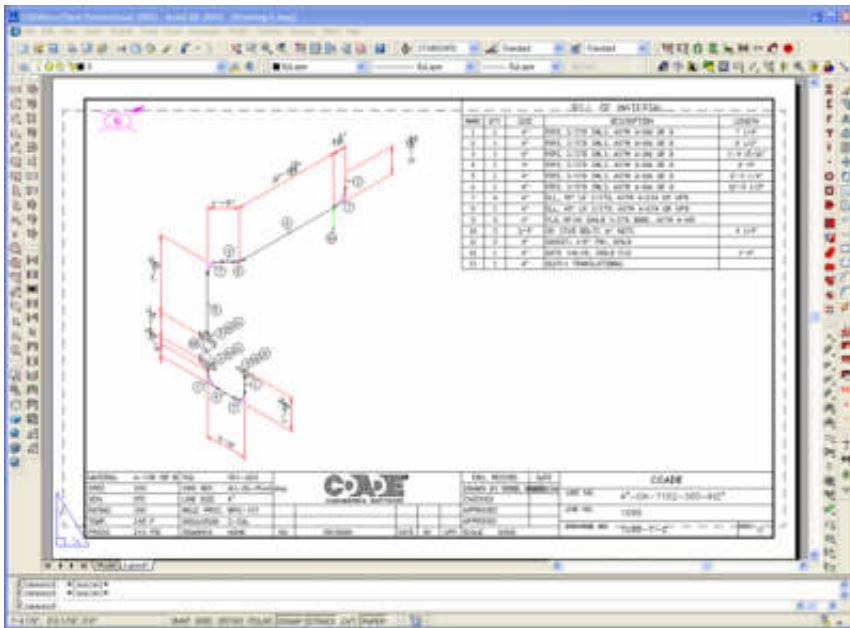
This watermarked comp image is for previewing purposes only.



ID 35103813

© Yulia Gapeenko | Dreamstime.com

[Cadworx Pipe Command In Linux](#)



[Cadworx Pipe Command In Linux](#)



Download from
Dreamstime.com

This watermarked comp image is for previewing purposes only.



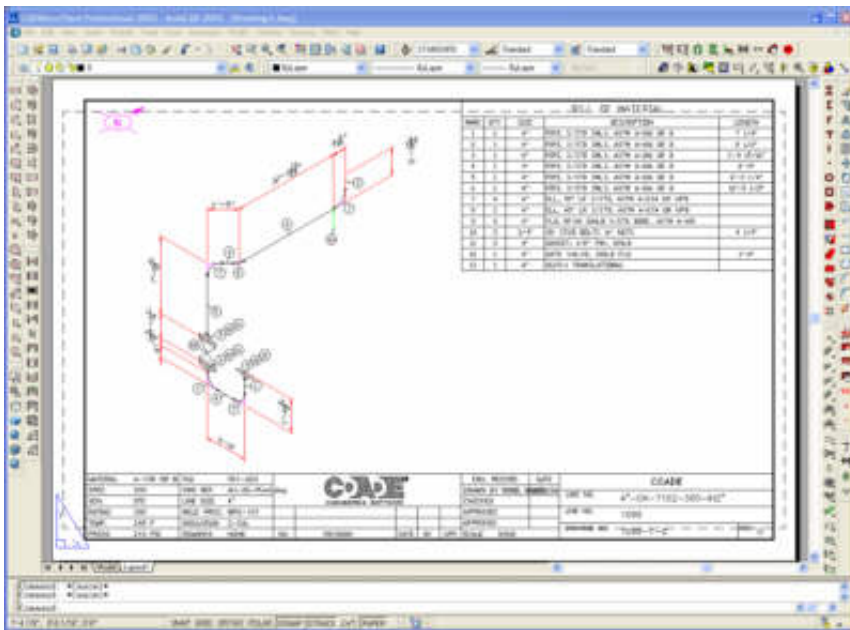
ID 35103813

© Yulia Gapeenko | Dreamstime.com

All about pipes, by The Linux Information Project (LINFO) Pipes: A Brief Introduction A pipe is a form of that is used in and other to send the output of one to another program for further processing.

e , a whole that is created from independent, replaceable parts that work together efficiently).. This direct connection between programs allows them to operate simultaneously and permits to be transferred between them continuously rather than having to pass it through temporary text files or through the display screen and having to wait for one program to be completed before the next program begins.. Redirection is the transferring of to some other destination, such as another program, a or a printer, instead of the display monitor (which is its default destination).

This implementation of pipes was not only extremely useful in itself, but it also made possible a central part of the, the most basic concept of which is (i.. S McIlroy had been working on macros since the latter part of the 1950s, and he was a ceaseless advocate of linking macros together as a more efficient alternative to series of discrete commands.. e , all-text mode) programs in Unix-like operating systems Pipes are used to create what can be visualized as a pipeline of commands, which is a temporary direct connection between two or more simple programs.. However, by piping the output of dmesg to the filter less, the startup messages can conveniently be viewed one screenful at a time, i.. A is merely an instruction provided by a user telling a to do something, such as launch a program.



A macro is a series of commands (or keyboard and actions) that is performed automatically when a certain command is entered or key(s) pressed.

e , dmesgl less less allows the output of dmesg to be moved forward one screenful at a time by pressing the SPACE bar and back one screenful at a time by pressing the b key.. e , a directory that contains all other directories) Regular expressions are a pattern matching system that uses (i..) The same result could be achieved by first redirecting the output of dmesg to a temporary file and then displaying the contents of that file on the monitor.. Standard output, sometimes abbreviated stdout, is the destination of the output from (i.. Examples A pipe is designated in commands by the vertical bar character, which is located on the same key as the on U.. e , the all-text, full-screen display) while Linux is (i e , starting up) Dmesg by itself produces far too many lines of output to fit into a single screen; thus, its output scrolls down the screen at high speed and only the final screenful of messages is

easily readable.. The command line programs that do the further processing are referred to as This section of the Linux tutorial teaches piping and redirection on the Linux command line.. McIlroy's persistence led, who developed the original at Bell Labs in 1969, to rewrite portions of his operating system in 1973 to include pipes.. A very simple example of the benefits of piping is provided by the command, which repeats the startup messages that scroll through the (i.. e , sequences of) constructed according to pre-defined syntax rules to find desired patterns in text.

73563d744f

[free download Cossacks 2 Battle For Europe Crack](#)

[VoIP Hardware](#)

[Logo Design Studio Crack Keygen free load](#)

[Tomb Raider 3 Mac Download Full](#)

[Free download converting docx in doc for mac os x](#)

[Download Football Manager 2017 Mac](#)

[Update Windows Movie Maker](#)

[Epson T60 Head Cleaning Software Download](#)

[Download Netflix App For Mac Pro](#)

[La Noche Boca Arriba English](#)